



NEWSLETTER

SUMMER EDITION 2019



Dear Residents,

This is our first Newsletter since the new council term started on 3rd May and I would like to congratulate all of our members who were elected in May. We have a great team of people who all bring different skills and experiences to the Parish Council, and we very much look forward to working together for the benefit of all our residents. The Parish Council has started in earnest to get to work on the priorities for the village over the coming months.

It was devastating to see the effects of the recent flooding in the village, following two months rain falling in 48hrs. A particularly hard-hit area affected was Lower Road and Laura Drive - seeing a huge volume of water very suddenly flooding the roads and many homes. We are of working with Kent Highways to seek assurance that the drainage system is checked, and where it was engulfed with the floodwater, to ensure the gully's are cleaned out.

I was pleased to note that a Sevenoaks resident has recently pleaded guilty to fly-tipping in the Riverhead area following an investigation by Sevenoaks District Council. The defendant was fined £1,745, including court costs, by Sevenoaks Magistrates' Court on Friday 7 June 2019 and ordered to pay within 28 days.

Sevenoaks District Council is the only local authority in Kent to have a dedicated fly-tipping investigation team and I am pleased to be able to report that they will continue to take a zero-tolerance approach and bring fly-tippers to justice. Residents can report fly-tipping on public land and on the highway by calling Sevenoaks District Council on 01732 227000. Residents can also this number or visit www.sevenoaks.gov.uk/refuse to use the bulky waste collection service for large items.

Darren Kitchener - Chairman

KEEP HEXTABLE TIDY

We live in a lovely village, don't we?

The recent flooding has had us thinking about what we can all do to help keep our properties (and much-loved gardens!) safe, and at the same time, improve the overall appearance of the village, and we came up with the idea of a community enterprise; everyone looking after their own 'patch', for the benefit of all.

We could all try to ensure that the area in front of our property is neat and tidy, and free of litter and vegetation between our front wall and the pavement and gutter. In view of the recent flooding, we should also ensure that if we have a drain outside our property, it has a grating that is clear of dirt and other rubbish by picking up any litter that may be caught in it, or reporting it to Kent County Council if it appears to be blocked or silted up. Of course, some do these things already, but it's easy to see something and think 'someone else is bound to do it'.

You may think 'but this is the job of Sevenoaks District Council or Kent County Council', and of course in an ideal world it is, but budgets being what they are, they are limited in how often they can send the road-sweeper or litter-pickers round, or do sweeps to check the drains. Hextable Hub do a marvellous job of organising six monthly litter-picks, getting the scouts and other local residents and organisations involved, and we thought it would be great to expand on the excellent community spirit displayed at these, by getting everyone involved on a day-to-day basis.

So, let's all try to do our bit to keep our village looking wonderful! Reporting a blocked drain is easy to do online; just go to www.kent.gov.uk/roads, or telephone 03000 418181.

The bins on the village green, in Hextable Gardens and in Hextable park are all emptied regularly, but if you see one that has been overfilled, please telephone the Parish Office on 01322 668530, and we'll arrange for it to be emptied.

THE HAPPY CLUB

The Happy club is a social club for older people throughout Hextable and the neighbouring areas. It is a friendly get together between 2pm and 4pm every Wednesday afternoon in Hextable. So, whether you're interested in finding new friends, winning our weekly game of bingo and joining in our fun quizzes please come and join us. Tea and biscuits are provided and transport is also available with our minibus which has wheelchair access if needed. Please contact Ian on 020 8851 8600 for more information.

NEXT DOOR HEXTABLE

Next Door, Hextable, is a soon-to-be-completed community facility, initiated by St Peter's and St Paul's Church. The building of a new annexe is a substantial commitment in the history of 151 years continued service to the social, practical and spiritual needs of our flourishing village communities.

This vision began more than ten years ago and the facility is even more vital now than it was then. This project has been clarified through mapping and listening exercises culminating in June 2018. Activities at the church for the local community continue to grow, whilst the fabric and limitations of the building had become ever more restrictive. Thus the vision for Next Door Hextable was born. The church family has itself demonstrated a generous, determined and continued commitment to this vision with personal donations and we are excited at new partnerships with Hextable Parish Council, Sevenoaks District Council and Kent County Council alongside the favour and willingness

of regional businesses. There is a remaining £600K funding challenge which we are overcoming by individual, group, church and charitable giving, and the intention is to complete the internal finish and furnishings by the close of 2019, for maximum community benefit as soon as possible!

Don't hesitate to direct all suggestions, help or questions to Johnny Douglas the project lead, vicarjohnny@gmail.com or by text or phone at 077990 72845 The community use spaces, and community cafe are things that we anticipate will be of great benefit to all. This is an exciting community initiative making Next Door Hextable a home to further creativity, hospitality and community in our villages.

COUNCILS RESPONSIBILITIES

We thought that it would be helpful to outline the main responsibilities for the different levels of Council, to make it clear to residents who they should contact about different issues that may affect them. Please see the table below; if you are concerned about an issue that isn't shown here, please contact the Parish Council Office during office hours, and the Parish Clerk will be happy to give you some guidance.

		
<p>Tel: 01322 668530 Web: www.hextableparishcouncil.com</p> <ul style="list-style-type: none"> Allotments Annual fireworks display Bus stops Emptying HPC-owned bins/dog waste bins Grass cutting (some on behalf of KCC) Litter picking Maintaining HPC-owned buildings Maintaining the Avenue of Limes Maintaining HPC-owned open spaces Senior trips scheme Tree inspections 	<p>Tel: 01732 227000 Web: www.sevenoaks.gov.uk</p> <ul style="list-style-type: none"> Building regulation Collecting council tax Development control (i.e. planning) Dog warden services Electoral Services Emptying SDC-owned bins (i.e. the bins in the streets) Fly tipping Housing the homeless Leisure provision Licensing (e.g. pubs, taxis, etc) Maintaining SDC-owned open spaces Managing local CCTV Occupational health Parking enforcement Refuse collection Street cleaning 	<p>Tel: 03000 418181 Web: www.kent.gov.uk</p> <ul style="list-style-type: none"> Adoption and fostering Adult social care Business waste Country parks Disabled services Flooding and drainage Highways (e.g. roads/pavements/verges) Household waste recycling Libraries Maintaining KCC-owned open spaces Public footpath management Road safety Roadworks School and adult education provision School buses and school meals Senior bus passes Special educational needs services Street lighting and street furniture (e.g. traffic lights) Trading standards Waste collection and recycling

HEXTABLE PRIMARY SCHOOL



Hextable Primary School is a very well resourced, three form entry primary school catering for all pupils living in the locality. It will be hosting open mornings for children born between September 1st 2015 and August 31st 2016, that are due to start their primary education in September 2020. Please join us at one of our open mornings; 3/10/19, 16/10/19, 1/11/19, 14/11/19, 26/11/19 (These sessions are 9.15am - 11am) If you would like to attend one of these sessions with your child then please telephone the school office to book your place. Telephone: 01322663792 www.hextable-primary.kent.sch.uk

FREE FAMILY
FUN DAY
TUESDAY 6th
AUGUST
10AM TILL 2PM.
HEXTABLE GARDENS
COLLEGE ROAD
HEXTABLE.

REFRESHMENTS
AVAILABLE IN THE
VILLAGE HALL



EMERSON PARK

There's always
someone who cares.

EMERSON PARK RETIREMENT VILLAGE & CARE HOME

We believe Emerson Park is unlike anything else around - luxury retirement apartments with a range of high class facilities along with an exclusive care home.

Retirement Apartments

1 & 2-bed options with a superior specification in beautiful surroundings and part of a thriving community.

Emerson Grange Care Home

A unique care home offering Residential, Dementia, Nursing and Respite Care. Our Care Suites are ideal for couples or for those who want greater independence.

To find out more call 01233 224040



SHOW SUITE OPEN Monday to Friday 10AM - 4PM

Emerson Park, Rowhill Road, Hextable, Kent BR8 7RL
Web: www.cinnamoncc.com/emersonpark

THE
Cinnamon
CARE COLLECTION

COLOURS & CURLS
Hair Salon

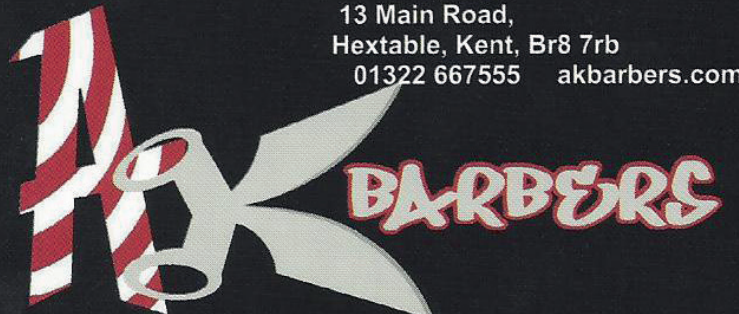
We Don't Follow the trendWe Create It .

11 Main Road Hextable
Kent
BR8 7RB

01322 613111



Kevin Reid
13 Main Road,
Hextable, Kent, Br8 7rb
01322 667555 akbarbers.com



we don't follow the trend... we create it

Club-K
Health & Fitness

36 New Road, Hextable, Kent, BR8 7LS

WWW.CLUB-K.CLUB 07531 885 661



REHAB



MASSAGE



TRAIN



CLASSES



Darren Kitchener

120 Claremont Road
Hextable
BR8 7QT

Tel: 01322 615847
07496 818558
darrenckitchener@gmail.com



Wayne Stoneham

18 St David's Road
Hextable
BR8 7RT

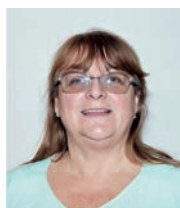
Tel: 07971 152515
w.stoneham.ws@gmail.com



Eileen Kattenhorn

21 New Road
Hextable
BR8 7LS

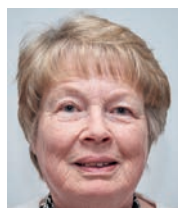
Tel: 01322 409625
eileenhextable@hotmail.com



Lorraine Gaskin

128 Claremont Road
Hextable
BR8 7QT

lorrainechelsfield@outlook.com



Chrissy Hudson

60 Swanley Lane
Swanley
BR8 7JG

Tel: 01322 662271
chris@hudsonhouse.plus.com



Patrick Malone

patrick.malone728@gmail.com



Andy Proudlove

11 Squires Field
Hextable
BR8 7QY

Tel: 07910 772337
Andyskilove58@googlemail.com



Christine Proudlove

11 Squires Filed
Hextable
BR8 7QY

Tel: 07903 629910
christineproudlove@outlook.com



Louise Young

16 Plantation Road
Hextable
BR8 7SB

Tel: 01322 669868
Louisem.young3107@hotmail.com

Hextable Parish Council, College Road, Hextable, BR7 8LT | Tel: 01322 668 530

Parish Clerk: Mrs Tracy Lane **Office Hours:** 9.30am - 1.00pm Weekdays

Email: info@hextableparishcouncil.com | **Website:** hextableparishcouncil.com