



# JULY 2024 NEWSLETTER

[Avenue of Limes](#) | p3

[Lambs Close](#) | p6

[2024 Budget](#) | p8-9

[info@hextableparishcouncil.com](mailto:info@hextableparishcouncil.com) | 01322 668530

# Chairman's Introduction

Welcome to our latest Newsletter.

Since our last edition in December, there has been a lot going on and we continue to work hard to maintain the village environment that our residents and visitors to Hextable can enjoy.



At long last, we have started to see some sunshine after a very cold and wet spring. The weather has been a hinderance for us, just as it has been for any of our keen gardeners, who have been waiting to get outside and get ready for the summer.

The wet weather had prevented our busy grass cutting season, but at the time of writing, I am pleased that our grounds staff have now been able to get into the routine grass cutting season to keep our open spaces looking good.

During the summer season, our grounds staff can be seen out on both land that we own, and a number of areas that we manage under contract for Kent County Council for some of the highways verges, such as along Lower Road.

*Front cover image courtesy of John Edwards, Retired Groundsman*

# The Avenue of Limes

The Avenue of Limes, that provides a pedestrian access between Hextable and Swanley is land owned by Kent County Council. When the Parish Council took over from Swanley Town Council, back in 2008, we inherited a lease to maintain this land.

With the miserable weather behind us, this is normally the time that our grounds staff spend on grass cutting. We are always proud of all the hard work that Lewis and Barry put in to keep our open spaces and grass verges cut throughout the growing season.

## STOP PRESS

As this newsletter goes to press, some of you may have spotted that the grassed areas are not presently up to their usual standard. The Parish Council operate and maintain two ride on grass cutters, but unfortunately both pieces of plant have developed faults that we are waiting to be repaired. This situation is rare, as we always carry service and repair in the winter season, but coincidentally the faults have put the grass cutters out of service. They both require specialist parts to be fitted.

Normally during the summer season, our grounds staff spend a large proportion of their time out across the village cutting grass on all the land we own, and a number other areas that we manage under contract for Kent County Council, such as highways verges along lower road.

We hope to get back cutting from 2nd August. Please bare with us whilst we catch up on the backlog.



# Avenue of Limes Access for All Project

Councillors have received several enquires asking us if we could do something to make the avenue of limes more accessible for people with pushchairs and using mobility scooters.

Although the lease for HPC to maintain this space expired in February this year, we have been working closely with our KCC Councillor, Perry Cole, to progress this project.

We have already made some good progress in getting this ambition realized including:

- We have secured two specially designed access gates that operate using a Radar Scheme Key, and these are currently in storage ready to be installed.
- We have received agreement in principle from the land owner, Kent County Council to install them,
- The Parish Council have budgeted to undertake the work needed to open this space up in the current municipal year

We hope to get these installed during the summer and look forward to opening up the Avenue of Limes to enable more people to use this access to access Swanley

CLlr Darren Kitchener  
Chairman, Hextable Parish Council



# Hextable Osteopath

*Continuing a twenty-year tradition  
of patient-centred osteopathic care*

07579 003365

## Specialist treatment

Back pain and sciatica  
Neck & shoulder pain  
Elbow, hip & knee pain  
Headache & migraine  
Sports injuries  
Arthritic pain  
Fibromyalgia  
Neuralgia  
General tension  
Post-surgery rehab

## What others have said

*Friendly, professional and  
very thorough – Maxine*

*...a highly skilled and  
empathetic practitioner  
– Viv Pipe*

*I felt I was in reassuringly  
safe hands immediately  
– Alison*

*I would have no  
hesitation in  
recommending  
him  
– Michelle N*



Could osteopathy help you  
or someone you know?  
Call with any questions  
and without obligation.

Jason Cook BSc(Hons) Ost  
St Peter's Church, College Road, Hextable BR8 7RH  
07579 003365 [hextableosteopath.co.uk](http://hextableosteopath.co.uk)



# Lambs Close

King & Johnston are currently progressing well with the former Egerton Nursery site to build 35 new houses that started in January 2023.



Hextable Parish Council supported the change of use for the development in the former Egerton Nursery site to provide residential homes for sale, for shared ownership and affordable rent, which has already started to transform the area. We are also pleased that the Parish Council was consulted on the name of the new road and we were happy to agree on Lambs Close for the name of the new road.

King & Johnston have been building quality new homes in carefully selected locations in Kent for 35 years. With decades more combined

industry experience, the whole team takes pride in providing homes designed and planned to meet the demands of different lifestyles, built to the highest standards of workmanship and attention to detail and completed to harmonise with the local environment.

King & Johnston commenced development of their scheme for 35 houses in January 2023. The new private cul-de-sac will be known as Lambs Close and adjoins the Green Belt. They apologize to local residents for any temporary inconvenience caused during construction compounded by some unusually wet weather.

The first phase of 14 houses have progressed on schedule and are now being handed over to their Housing Association partner Town & Country Housing. This phase provides five 2 & 3 bed houses for sale via Shared

Ownership and nine 2 & 3 bed houses for affordable rent.

Enquiries for the shared ownership houses should be addressed direct to Town & Country either via a link on their website

[www.lovelivinghomes.co.uk](http://www.lovelivinghomes.co.uk) or by emailing them at

[sales.services@lovelivinghomes.co.uk](mailto:sales.services@lovelivinghomes.co.uk)

Those interested in the houses for affordable rent will need to contact Sevenoaks District Housing Department who deal with nominations

[www.sevenoaks.gov.uk](http://www.sevenoaks.gov.uk)

We understand that applicants for the affordable homes will need to have a connection with Sevenoaks District to qualify.

King & Johnston are also on target to deliver the remaining 21 houses for open market sale over the coming months.

The development will consist of 2 & 3 bed semi-detached houses, 3 bed detached houses and 4 bed detached houses mainly formed around a new private open space. It will feature no less than 13 different house types/elevations.

The high specification will include underfloor central heating to ground floors, heated by innovative Air Source Heat Pumps for clean energy. The new homes will also include electric car charging points, Quartz worktops to contemporary designed fitted kitchens with fully integrated appliances, en-suites to master bedrooms in all but two houses, intruder alarm systems, telephone and TV points to kitchens, living rooms and all bedrooms. Chrome switches & sockets, modern glass to stair cases. At least 2 private parking spaces to every house with single car barns to detached 3 bed houses and double garages to the 4 bed detached houses. All new homes will be covered by a NHBC 10 year warranty for peace of mind.

The first release of 8 houses will comprise 2 & 3 bed semi-detached and 3 bed detached houses which are due for completion in June and will be launched from an on-site marketing suite.

Savills have been appointed the sole selling agents and enquires should be addressed to them by calling their South East New Homes Team on

01732 789 740

or emailing

[senewhomes@savills.com](mailto:senewhomes@savills.com)



# Hextable Parish Council

## BUDGET

The parish council is responsible for a number of things in the village, including the cutting of grass, the maintenance of buildings we own and assets in and around the village such as the play equipment and buying and maintaining the equipment that our grounds staff use. Each year, we have to set a budget to cover all of this work, and Sevenoaks District Council collects this on our behalf from council tax payers in Hextable.

There are nine Hextable Parish Councilors who represent you who decide upon what money is needed to maintain and repair these assets for the following year, so it is really important that we take everything into account to ensure we have sufficient funds. We are always mindful of how we spend residents' money, so we always look to spend within our means.

Over the past couple of years, just like every household and other

organisation, we have faced rising costs, particularly with rising energy costs. Although the Parish Council had been protected by competitive three year fixed energy tariffs, these have now ended and we have seen costs rise dramatically. Businesses and local government are not protected by the price cap that domestic customers are.

**Just like households however, we have taken measures to reduce our consumption, by changing the way the heating is controlled and the move to energy efficient lighting etc.**

Around 25% of our income we receive comes from the various facilities we rent or lease. This income hugely declined during the pandemic, but thankfully this has been steadily recovering over the



# Hextable Parish Council

## BUDGET

past 2 years, and as you will see in this newsletter we have invested in redecorating the village hall to give it a fresh look and help us increase the bookings made for the use of the Village Hall.

All our buildings are old, and since 2008, we have gradually invested in making repairs and improvements to them. The Parish Council does have some financial investment decisions to make in the medium term though - not least, the main Parish office building. Over the past year, we have engaged with some professional services who have surveyed and assessed our buildings. The Parish building, that is sometimes referred to as the Heritage Centre, was the former botany laboratory of the Swanley Horticultural College, built around the 1920's. There are a number of problems with this building, not least the fact that it is a solid wall construction, with high ceilings, a flat roof and a basement.

Following some substantial investment within our first few years as a parish council to re-coat the exterior walls and lay a new roof, both these will need attention once again in the near future. It is estimated that an investment of c£120,000 would be needed in the medium term to bring the building anywhere near the standard that is needed.

When setting our budget for this year, we had to look at the effects of inflation on costs, and it is necessary for us to ensure that our income is sufficient to sustain our expenditure.

**Following the work to refurbish the village hall, we need to start to set some funds aside towards future repairs and maintenance.**

# CLUB-K HEALTH AND FITNESS CELEBRATES A DECADE OF EXCELLENCE

Club-K Health and Fitness, located right in the heart of our community, is celebrating a major milestone—its tenth anniversary!

Over the past decade, Club-K has become a cornerstone for health and wellness, providing top-tier fitness services and creating a welcoming environment for everyone looking to improve their physical well-being.

36 New Road  
Hextable  
BR8 7LS

07531885661  
www.club-k.club

This year has been particularly momentous for Club-K, as they have garnered significant recognition in the fitness industry, winning several prestigious awards:

**Prestige Awards:** Sports Massage Therapy Centre of the Year for the third consecutive year.

**Business Elite Awards:** Best Fitness & Training Facility of the Year.

**Best of the Best Awards:** Sports Health Specialist of the Year 2023/24.

**British Fitness Awards:** Long List Finalist for Sports Therapist of the Year.

These accolades reflect the commitment and excellence that Club-K brings to its services, reaffirming its position as a leading health and fitness provider.

To further their mission of enhancing community health, Club-K has recently introduced a new class—Rehabilitation, held every Thursday at 11:30 AM. This class is specifically designed for individuals recovering from injuries, those with medical conditions like high cholesterol, joint replacements, or those completing Phase IV cardiac rehabilitation. The rehabilitation class is a perfect continuation to maintain fitness and health in a supportive and structured environment. This class is based on a seated class with some light walking and resistance exercises.

At Club-K, their mission is clear: To get everyone moving in a way that improves their lives. The team at Club-K leads and inspires with their extensive knowledge and experience, fostering a fun and friendly community. Whether it's through classes, massage therapy, rehabilitation, or personalized training, Club-K is dedicated to helping every individual achieve their health and fitness goals.

For more information about Club-K Health and Fitness and to explore their wide range of services, visit their website at [www.club-k.club](http://www.club-k.club). Join the community at Club-K and be a part of a fitness journey that's recognized for excellence and built on a decade of success.

**Contact Information:**

**Website:** [www.club-k.club](http://www.club-k.club)

**Address:** 36 New road, Hextable, Kent, BR8 7LS

**Phone:** 07531885661

Celebrate with Club-K and experience the award-winning services that have made them a staple in our community for the past ten years. Here's to many more years of health, fitness, and community spirit!





# Seniors Film Afternoons

Since launching the Seniors Film Afternoons, we have received some real positive feedback from those resident's that have attended.

These events, held in the village hall, have proved to be quite popular, providing an additional social event. If you are interested in attending, please look out for the posters on the Village Notice Boards, outside the Post Office and the Parish Office and in the Village Hall, or contact our Clerk for information.

If you are one of our senior residents, and you would like to come along for a free event. including free refreshments, you are most welcome!

The latest film afternoon, held on **Tuesday 16th July** was very much enjoyed by those attending to watch The Kings Speech.

Our next film afternoon will be on **Tuesday 1st October**, and we very much look forward to seeing a good crowd there!

# HEXTABLE TODDLERS GROUP

**Hextable Toddlers Group have been running for over 20 years.**

We meet every Wednesday morning (term time) 9.30am till 11.30am. We provide for babies to preschool children.

It's £2.50 per family. We stop for snack which we provide for the children and tea, coffee and biscuits for the adults.

We have lots of lovely toys and craft out every week.

If you would like to come along or more information please email me on [Jennie31noah@virginmedia.com](mailto:Jennie31noah@virginmedia.com)



# Village Hall Redecoration



During the Easter holiday, the Parish Council carried out some much needed redecoration work to the village hall. The Village Hall provides an affordable and convenient space for individuals, societies, clubs and companies to book for a wide variety of purposes

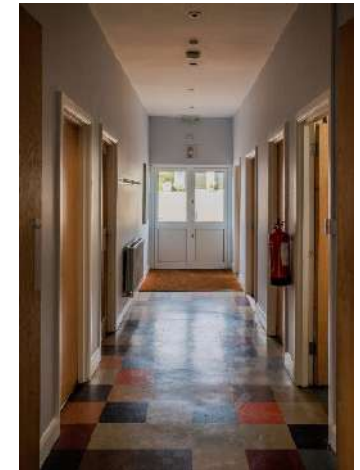


Having previously invested in a newly fitted kitchen, the hall has now been completely redecorated, with a new internal storage room built to hold tables and chairs, that has transformed the space into a clear, fresh and airy space that will be much more attractive to hirers.



There are various facilities available in and around Hextable, such as Next Door Hextable and The Howard Venue, but the village hall is a perfect small venue, that is already used particularly for things like young children's parties, but there is availability

We already hire this out to regular and returning users, so if you are looking for that local venue to hold your event, you can book this by simply contacting our Clerk on **07999 127485** or emailing **[info@hextableparishcouncil.com](mailto:info@hextableparishcouncil.com)**  
The hall can be hired for £25 per hour, or £18 for Hextable residents





# Sevenoaks Local Plan 2024

The Local Plan explains how the Council intends to meet development needs and protect the environment in Sevenoaks District up to 2040.

The document focuses on the opportunities for new homes, employment spaces and infrastructure provision in and around existing settlements. The Government-set housing target for the district is 10,680 more houses by 2040. This represents an increase of around 20%.

Plan 2040 proposes a number of sites for development, including some in the Green Belt, and the current published plan for consultation includes no sites proposed within Hextable. The eight sites that are included where development may be permitted around the periphery are: Sevenoaks; Swanley; Edenbridge; Westerham; Otford; New Ash Green; Hartley; West Kingsdown.

SDC plans to focus future development in the eight existing towns and service settlements. However, they will also consider the potential contribution of Green Belt land, in exceptional circumstances, where the land is considered to be underperforming Green Belt and where it is sustainably located next to one of the eight towns or service settlements.

All the c5000 comments received are now being reviewed, and an updated plan being prepared for members of the Development Control Advisory Committee to review before the next revision is put out for the next stage of public consultation. The Plan will be submitted for public examination, by a government-appointed Planning Inspector, in late 2024.



**Hextable Primary School are delighted to share that they have achieved the National Nurturing Schools Award.**

This is an award for schools that have attended the National Nurturing Schools Programme (NNSP) and which have succeeded in creating a nurturing culture for the children and young people in their care. We have been working towards this award for the past year and our success aligns perfectly with our recent Good grading at Ofsted, which also confirmed the strengths in nurture and wellbeing at the school. This recognises everything we do every day to support pupils to feel happy and safe in school.

The assessment process for the award involved conversations with pupils, parents and staff and we would like to extend a huge thank everyone who contributed.





Remembering someone special with a gift in their memory

Helping to raise funds for a cause close to a loved one's heart can be a very positive way to celebrate their life

### Giving In Memory to We Are Beams

- ✿ Donating in memory instead of flowers
- ✿ Funeral collections
- ✿ A regular in memory gift
- ✿ Leave a lasting legacy in your will

However you decide to support us, we will be happy to help [fundraising@wearebeams.org.uk](mailto:fundraising@wearebeams.org.uk)



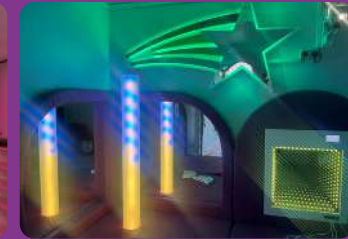
[www.wearebeams.org.uk](http://www.wearebeams.org.uk)



Your donation will go towards supporting disabled children, young people and their families



## We Are Beams Facility Hire



We Are Beams support families every step of the way through the unique challenges of raising a disabled child. The disabled children and young people who access our services are aged between 4-19 years. They will usually have one or multiple learning difficulties, complex health needs such as Down Syndrome, Cerebral Palsy or another life limiting illness, physical or sensory impairment, challenging behaviour as a result of their disability, Autism or severe ADHD.

All areas at We Are Beams are fully accessible and are available to hire to the local community, schools and SEN groups. Facilities include

- Newly Refurbished Garden- With specialist fully accessible outdoor play equipment, a swing, trampoline and sports equipment plus water play and a growing area for plants and vegetables.
- Cinema Room featuring a 98-inch screen, a tailor-made media wall, surround sound, and ambient lighting.
- Soft play room with ball pit
- New Sensory Cabin- fully equipped with colour and light columns, interactive wall carpet and projector
- Large Playroom with TV/DVD player and games console
- Kitchen and Dining area



For more information and to book please contact We Are Beams, Allsworth Court, 38-40 St David's Road, Hextable, Kent BR8 7RJ

01322 668501 ext. 5 - [www.wearebeams.org.uk](http://www.wearebeams.org.uk) - [fundraising@wearebeams.org.uk](mailto:fundraising@wearebeams.org.uk)



Hello, my name is Helen Smith and I'm a British Wheel of Yoga, trained teacher.

I love practicing Yoga and have done so for many years. It has become a way of life.

Sharing my joy of Yoga with others is a great privilege for me. I love to watch my Yoga students come into my classes and grow in strength, stamina, flexibility and confidence. Leaving with less pent up emotions and a feeling of peace and calm.

The Yoga classes I hold at the Heritage Centre here in Hextable are just small, 10 at the most, so quite intimate and friendly. We all get to notice how each of us change and adapt over the weeks. Although working seriously at achieving lovely postures, the atmosphere is happy and relaxed. We tend to laugh quite a lot as we work through our Yoga practice.

The Tuesday morning class is for 1 hour. It's a good start to the day before a coffee at the cafe. Often needed, as it is usually a bit chilly in the Heritage centre.

Wednesday evening class is an hour and a half long, so there is more time to bring finesse to the Asana postures.

Each class is run on a 4 weekly booking. If you would like to learn more just give me a call on 0777 347 8008.

Helen - Namaste

# ANAGRAM

Can you spot the famous sporting events below?

1. A Costly Ora
2. Round The Craftee
3. Milo is Scrappy
4. Dragon Tail Ann
5. YT Bruising Saxon
6. Six Para Night Bird
7. y Tolerate Henry Gala
8. Women, Man, Child, Bishop sip
9. Gappy Ma Miracles
10. B Smartest Irish

Anagram answers on page 23





# SWANLEY & DISTRICT TWINNING ASSOCIATION



**Expand your horizons, learn to play pétanque, try out some authentic French recipes, visit Paris and its environs, try out La Vie Francaise.....**

We are a very friendly local group, with a varied programme of activities, and twice a year meet up with our friends from Verrieres le Buisson. Our “twin town” is close to Paris and our friends there delight in showing us some very interesting places on our regular visits.

We have just returned from our usual short stay with them over the May Bank Holiday weekend

And they are coming here to promote the Association at the annual 1812/ Fireworks event in Swanley Park on

23rd August. Why not walk across and meet them and some local members and think about joining in the fun? Still to come this year – our Chairman’s BBQ, A Bowls evening, local walks, a Curry Night, some Pétanque, our Christmas Dinner.

Vive le Jumelage! In English?

Long Live Twinning!

If you are interested in getting involved, please contact **Chrissy Hudson on 01322 662271**

## Do you know about or have you heard of HexARA ?

It is your LOCAL group which meets the first Thursday afternoon of each month in Five Wents Hall.

It is one of over eighty Active Retirement Associations in Kent and we in Hextable help to foster friendship and enjoyment for those retired or semi-retired over the age of 50. We promote regular monthly meetings and other activities including entertainment events, holidays, outings, meals and visits to theatres which all contribute to your mental and physical well-being and share practical assistance when the need arises.

To become a member it will cost you a cup of coffee a month i.e. £24 a year.

We currently have a few vacancies so if you are interested please contact our Membership Secretary John Goodhew via email

[john.goodhew42@gmail.com](mailto:john.goodhew42@gmail.com)

### Anagram Answers

- |                       |                            |
|-----------------------|----------------------------|
| 1. Royal Ascot        | 6. British Grand Prix      |
| 2. The Tour De France | 7. Henley Royal Regatta    |
| 3. Paris Olympics     | 8. Wimbledon Championships |
| 4. Grand National     | 9. Paralympic Games        |
| 5. Rugby Six Nations  | 10. British Masters        |



# Hextable's



# Open Spaces

**Free Family Fun Day - Hextable Gardens**  
**10:30 - 13:30 on Tuesday 6th August**

Sevenoaks District Council return to Hextable for the popular and FREE Family Fun Days offering some action-packed activities over the school summer holidays. They include crafts, games, sports, and more in a friendly and safe environment.

There's no need to book, simply turn up and have fun. However, children

must be supervised by a parent or guardian at all times. Activities are provided for children under the age of 12, but they may not be suitable for very young children.

The days may change at short notice if there's severe weather, so please check this webpage or our **Facebook** and **X** accounts before setting off.

Please bring waterproof clothing, sunscreen and your own refreshments.

We are fortunate to have a number of fantastic open spaces in our village, with a wide variety of plants, shrubs and trees that provide year-round colour. Hextable Park is a great open space that is enjoyed regularly by residents, which particularly provides a perfect place for dog walkers.

Another popular open space that is enjoyed by regular users is Hextable Gardens. Our grounds staff have spent many hours improving this area for all our residents to enjoy. In

particular, they have focused effort on promoting the ecology of the area, and encouraging birds, animals and nature into the area.

Having secured the Memorial Garden at the bottom of Rowhill Road as the Memorial Garden a couple of years back, we have now moved the silhouettes of the soldiers to this space, and last November, we were pleased to place the poppy wreaths following the remembrance service in this space.





# Hextable Roll of Honour 2024

It was a great pleasure to join Hextable Methodist Church for their Sunday morning service recently to present Wendy Alldred with our Roll of Honour Award for 2024.



The Award recognises those people in our community who by their contributions have made Hextable a better place. Wendy is one of our "Unsung Heroes" – since arriving here with her family many long years ago she has done so much: She started the local Parent & Toddler group more than 20 years ago and still helps there today. She has held many roles in one of our local Churches, helped at the local Foodbank, and day by day, week by week, uses her car to offer lifts for folk to the doctors surgery, local hospital appointments and local group meetings of various organisations. She has helped so many neighbours, often undertaking regular school runs when Mums were ill, providing meals, and even opening her own home to people who needed help and shelter. Her name will be added to the Role of Honour Plaque in our Village Hall.

Cllr.Chrissy Hudson




**COLOURS & CURLS**  
Hair Salon

*We Don't Follow the trend ....We Create It .*

11 Main Road Hextable  
Kent  
BR8 7RB

01322 613111




Kevin Reid  
13 Main Road,  
Hextable, Kent, Br8 7rb  
01322 667555 akbarbers.com

*we don't follow the trend... we create it*



It's not a hoard, it's a collection.  
I just need a teeny bit more space.



**GREENBOX**

### Hextable Parish Council wins a Commendation at 2024 Wilder Kent Awards

Hextable Parish Council are proud to announce they have won a commendation at this year's Wilder Kent Awards for their hard work in helping to create a Wilder Kent.

The awards, which was supported by the Marsh Charitable Trust, saw 87 organisations shortlisted and their efforts resulted in a staggering 120,000 people in the county receiving the nature benefits from the actions taken by the entrants.

The finalists covered four categories, businesses, community groups, schools and villages, towns and cities. 18 received the highest accolade of gold, 23 silver, 27 bronze and 19 awarded commendations. They received their awards at a special ceremony at Canterbury University on Saturday, 20th July, hosted by TV presenter and producer of Talk on the Wild Side podcast, Rob Smith.

The Wilder Kent Awards were set up by Kent Wildlife Trust in 2020 as a way of recognising and rewarding the positive actions that groups across Kent are taking in order to protect wildlife and safeguard nature for future generations.



## STENIC ELECTRICAL CONTRACTING LTD

Tel or Whatsapp: 07930 209 725

Free No Obligation, Affordable, Realistic Quotations

- ✓ Callouts & Fault Finding
- ✓ Rewires & Renovations (including making good)
- ✓ Inspection & Testing Certification
- ✓ All Domestic & Commercial installations such as :  
Fuse Boards, Switches, Sockets, Lighting and Security Systems
- ✓ Energy Saving installations such as:  
EV Chargers, Solar & Battery Squirrel storage systems

### Why choose us:

- ✓ NICEIC Domestic & Commercial Approved Part P Registered
- ✓ Insured, Experienced & Fully Qualified
- ✓ Trusted, local Ltd business , 18+ years Registered
- ✓ Enhanced clean DBS Disclosure

Email: [Enquiries@stenic.co.uk](mailto:Enquiries@stenic.co.uk)

Facebook: [www.facebook.com/StenicElectricalContractingLimited](https://www.facebook.com/StenicElectricalContractingLimited)



<https://www.checkatrade.com/trades/stenicelectricalcontracting1007212>



# Handy Contact Details

## Hextable Parish Council:

Website [www.hextableparishcouncil.com](http://www.hextableparishcouncil.com)  
 Email [info@hextableparishcouncil.com](mailto:info@hextableparishcouncil.com)  
 Phone 07999 127485 (office hours only)  
 01322 668530

## Sevenoaks District Council:

Website [www.sevenoaks.gov.uk](http://www.sevenoaks.gov.uk)  
 Email [information@sevenoaks.gov.uk](mailto:information@sevenoaks.gov.uk)  
 Phone 01732 227000

## Report fly-tipping:

[www.sevenoaks.gov.uk/info/20000/rubbish\\_and\\_recycling/205/report\\_fly\\_tipping](http://www.sevenoaks.gov.uk/info/20000/rubbish_and_recycling/205/report_fly_tipping)

## Kent County Council:

Website [www.kent.gov.uk](http://www.kent.gov.uk)  
 Phone 03000 414141

## Report a pothole:

[www.kent.gov.uk/roads-and-travel/report-a-problem](http://www.kent.gov.uk/roads-and-travel/report-a-problem)

## Kent Police:

Emergency 999  
 Non-emergency 101  
 Report a crime online [www.kent.police.uk](http://www.kent.police.uk) – click on 'Report'

## Report a gas leak or carbon monoxide emergency:

Phone 0800 111 999

## Report a power cut:

Website [www.ukpowernetworks.co.uk/power-cut](http://www.ukpowernetworks.co.uk/power-cut)  
 Phone 0800 31 63 105

## Report a water leak:

Website [www.thameswater.co.uk/help/emergencies](http://www.thameswater.co.uk/help/emergencies)

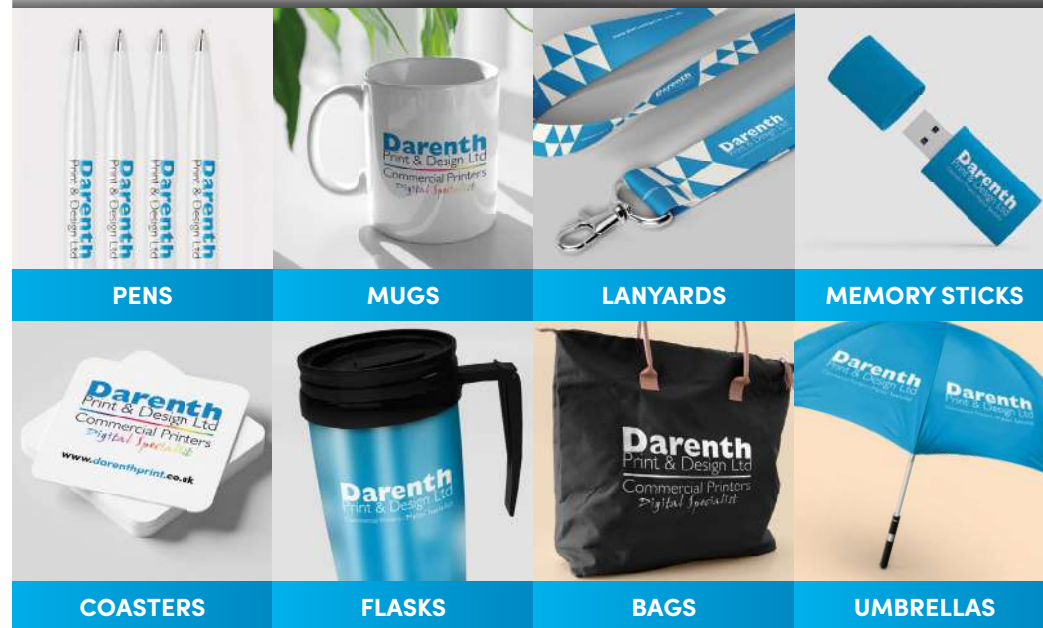
## Report animal cruelty:

Website [www.rspca.org.uk/utilities/contactus/reportcruelty](http://www.rspca.org.uk/utilities/contactus/reportcruelty)  
 Phone 0300 1234 999

**PROMOTE YOUR BUSINESS**

**Cost effective ways to put your name in front of your customers, all day long.**

We produce a variety of promotion items for both business and personal use with small minimum quantities, such as...



Click on the **PROMOTIONAL ITEMS** tab on our website to view the full range or contact the sales office for any other enquiries.

☎ 01322 288627 ✉ [info@darenthprint.co.uk](mailto:info@darenthprint.co.uk) 🌐 [www.darenthprint.co.uk](http://www.darenthprint.co.uk)

Unit 32 Mulberry Court, Bourne Industrial Park, Bourne Road, Crayford, Kent, DA1 4BF



**Tel: 01322 668530**

**Web: [www.hextableparishcouncil.com](http://www.hextableparishcouncil.com)**

- Allotments
- Annual fireworks display
- Bus stops
- Emptying HPC-owned bins/dog waste bins
- Grass cutting (some on behalf of KCC)
- Litter picking
- Maintaining HPC-owned buildings
- Maintaining the Avenue of Limes
- Maintaining HPC-owned open spaces
- Senior Events scheme
- Tree inspections



**Tel: 01732 227000**

**Web: [www.sevenoaks.gov.uk](http://www.sevenoaks.gov.uk)**

- Building regulation
- Collecting council tax
- Development control (i.e. planning)
- Dog warden services
- Electoral Services
- Emptying SDC-owned bins (i.e. the bins in the streets)
- Fly tipping
- Housing the homeless
- Leisure provision
- Licensing (e.g. pubs, taxis, etc)
- Maintaining SDC-owned open spaces
- Managing local CCTV
- Occupational health
- Parking enforcement
- Refuse collection
- Street cleaning



**Tel: 03000 418181**

**Web: [www.kent.gov.uk](http://www.kent.gov.uk)**

- Adoption and fostering
- Adult social care
- Business waste
- Country parks
- Disabled services
- Flooding and drainage
- Highways (e.g. roads/pavements/verges)
- Household waste recycling
- Libraries
- Maintaining KCC-owned open spaces
- Public footpath management
- Road safety
- Roadworks
- School and adult education provision
- School buses and school meals
- Senior bus passes
- Special educational needs services
- Street lighting and street furniture (e.g. traffic lights)
- Trading standards
- Waste collection and recycling